

Pelco Access Control

Supervised coming and going of personnel



PELCO

by Schneider Electric



Supervised access to working areas

The Pelco Access Control System allows companies of all sizes to supervise the movement of personnel in and around their premises and associated external areas. By monitoring and controlling personnel movement the system protects all assets such as property, personnel and any information related to business operations.

Access Control System reduces security risks and facilitates everyday routines



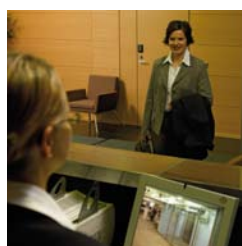
Access control, an integral part of the system, reduces security risks by controlling movements through external and internal entrances. It controls unauthorised access, alerts operators to events such as doors left open and keeps personnel to permitted areas. Use of electronic locks and access cards or tokens eliminates the need for mechanical keys. Access rights can be modified easily and quickly and voided if a card is lost. It also provides end users with an audit trail of all access events.

Where systems such as access control, intruder alarm, CCTV and fire detection are integrated, a common platform allows easy operation and multiple user interfaces.



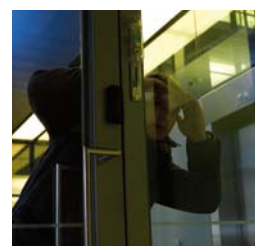
Video Monitoring

Alarms activated by access control, intrusion or fire detection trigger cameras that record the location or incident.



Intruder Detection

Intruder Detection parameters can be easily changed as appropriate by the use of access control terminals and identifiers. For example, zones can be temporarily disabled during hours of occupancy.



Solutions for security needs big and small



The Pelco Access Control System was developed to meet the security requirements of customers differing in scale and character – ranging from the needs of small companies to those of large multi national corporations with facilities extending over many locations. Security, ease of use, and operational expenditure savings can be improved by linking access control with systems for intrusion detection, video monitoring, fire detection, security lighting, building automation, and lighting control.

The system supports multiple user languages. It can be used simultaneously with a variety of PC user interfaces. Terminals automatically alter the language displayed according to the individual's native language access control profile.

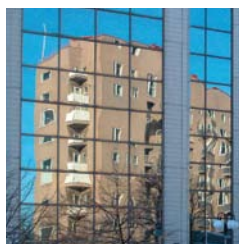
Fire Detection

When a fire alarm is activated, all exit doors and doors for firefighters can be automatically unlocked allowing the occupants to escape easily and the firefighting crew to enter.



Building Management Systems

When an electronic key is used to unlock an office door, the office lights can be set to turn on and the air conditioning system set point changed to comfort level.





Card readers for the access control system have three security levels: the identifier alone, the identifier with personal ID code, and the identifier with a biometric identifying (fingerprint). The identifier alternatives are: a card, an identifier tag or a card that allows to include the user's image. A smart chip can be embedded in the card so that it also operates in smart card applications.

The Esgraf Graphic User Interface

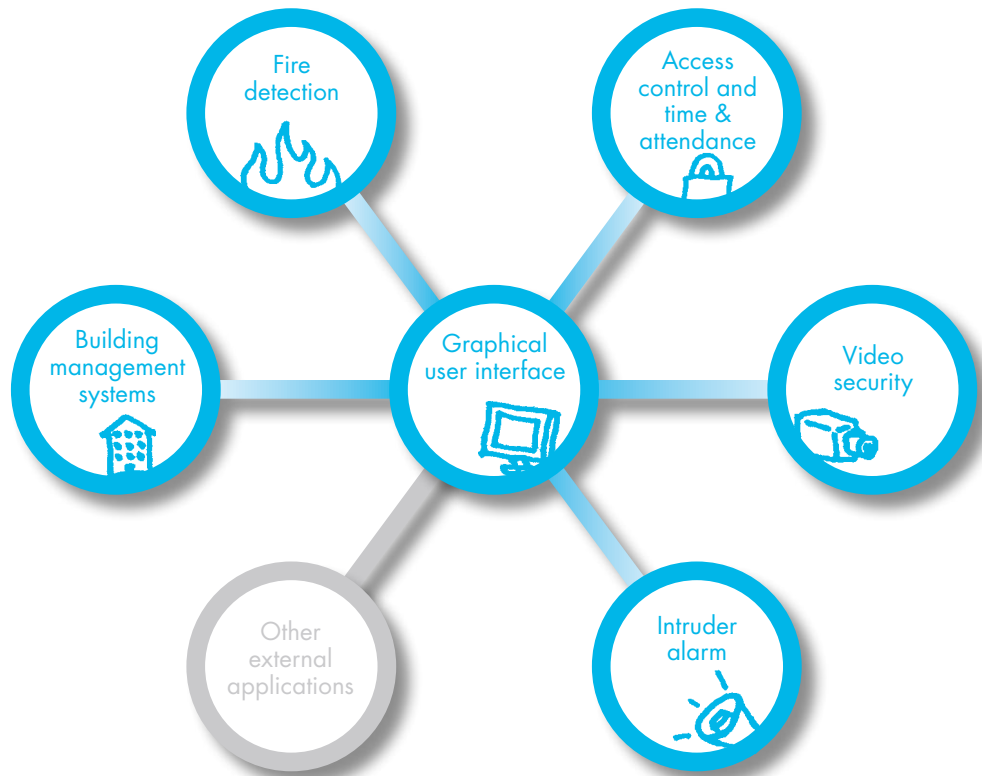
Esgraf is a graphic user interface that combines fire detection, video monitoring, access control and intruder alarms. In the event of an emergency the location of the alarm or the camera image linked to it immediately appears on the graphical floor plan. Esgraf can also be programmed to issue instructions for dealing with the alarm in question.

Estudio transfers personnel photos to ID cards

Estudio is a photo ID registration application that allows personnel photos to be imported from a digital camera or a compatible file. Estudio links with access control and time and attendance monitoring systems in the personnel register. Software is used to design the look of ID cards which can then be printed on an attached printer.



Pelco system integration increases efficiency



Pelco's independent security systems can be interconnected to provide better efficiency and fire security than with separate systems. Fire detection, video monitoring, intruder alarm and access control can operate independently of each other as individual security systems, but system efficiency performs best when applications are integrated. Pelco integration makes the system easier to manage regardless of location.